

# ePad

Microsoft 70-649

TS:Upgrading MCSE on Wndws Serv 2003 to Wndws Serv 2008

55 Q&A

Version 2.73

ePad Tool

[www.TopCerts.com](http://www.TopCerts.com)

## **Important Note, Please Read Carefully**

### **Other TopCerts products**

#### **A) Offline Testing engine**

Use the offline Testing engine product to practice the questions in an exam environment.

Build a foundation of knowledge which will be useful also after passing the exam.

### **Latest Version**

We are constantly reviewing our products. New material is added and old material is revised. Free updates are available for 90 days after the purchase. You should check your member zone at TopCerts and update 3-4 days before the scheduled exam date.

Here is the procedure to get the latest version:

1. Go to [www.TopCerts.com](http://www.TopCerts.com)

2. Click on **Log in**

3. The latest versions of all purchased products are downloadable from here. Just click the links.

For most updates, it is enough just to print the new questions at the end of the new version, not the whole document.

### **Feedback**

If you spot a possible improvement then please let us know. We are always interested in improving product quality. Feedback should be sent to [feedback@TopCerts.com](mailto:feedback@TopCerts.com). You should include the following: Exam number, version, page number, question number, and your login Email.

Our experts will answer your mail promptly.

### **Copyright**

Each iPad file is a green exe file. If we find out that a particular iPad Viewer file is being distributed by you, TopCerts reserves the right to take legal action against you according to the International Copyright Laws.

### **Explanations**

This product does not include explanations at the moment. If you are interested in providing explanations for this exam, please contact [feedback@TopCerts.com](mailto:feedback@TopCerts.com).

**www.TopCerts.com Q: 1** A domain controller named DC12 runs critical services. Restructuring of the organizational unit hierarchy for the domain has been completed and unnecessary objects have been deleted. You need to perform an offline defragmentation of the Active Directory database on DC12. You also need to ensure that the critical services remain online. What should you do?

- A. Start the domain controller in the Directory Services restore mode. Run the Defrag utility.
- B. Start the domain controller in the Directory Services restore mode. Run the Ntdsutil utility.
- C. Stop the Domain Controller service in the Services (local) Microsoft Management Console (MMC). Run the Defrag utility.
- D. Stop the Domain Controller service in the Services (local) Microsoft Management Console (MMC). Run the Ntdsutil utility.

**Answer: D**

**www.TopCerts.com Q: 2** Your company has a domain controller server that runs Windows Server 2008. The server is routinely backed up over the network from a dedicated backup server that runs Microsoft Windows Server 2003. Your manager asks you to prepare the domain controller for disaster recovery independent of the routine backup procedures. You attempt to back up the system state data for the domain controller, but you are unable to launch the Backup utility. You need to back up system state data from the Windows Server 2008 domain controller server. What should you do?

- A. Add your user account to the local Backup Operators group.
- B. Use the Server Manager feature to install the Windows Server Backup feature.
- C. Use the Server Manager feature to install the Removable Storage Manager feature.
- D. Deactivate the backup job that is configured to back up the Windows Server 2008 domain controller server on the Windows Server 2003 backup server.

**Answer: B**

**www.TopCerts.com Q: 3** Your company has an Active Directory forest that has six domains. The company has 15 sites. The company requires a new distributed application that uses a custom application directory partition named ResData for data replication. The application is installed on one member server in five sites. You need to configure the five member servers to receive the ResData application directory partition for data replication. What should you do?

- A. Run the Dcpromo utility on the five member servers.
- B. Run the Regsvr32 command on the five member servers.
- C. Run the Wbadmin command on the five member servers.

D. Run the RacAgent utility on the five member servers.

**Answer: A**

**www.TopCerts.com Q: 4** Your company has an Active Directory forest. The company requires a new distributed application that uses a custom application directory partition named ResData. You need to implement the ResData application directory partition for data replication. Which are the two utilities that you can run to achieve this goal? (Each correct answer presents a complete solution. Choose two.)

- A. Dnscmd
- B. Ntdsutil
- C. Wbadmin
- D. RacAgent
- E. Regsvr32

**Answer: A, B**

**www.TopCerts.com Q: 5** Your company has a single-domain Active Directory forest that runs the Windows Server 2008.

An administrator accidentally deletes an organizational unit that contains 2,000 objects in the Active Directory database.

You use a third-party backup utility that backs up system state data. You restart a domain controller in Directory Services Restore Mode (DSRM).

You need to perform an authoritative restore of the organizational unit and return the domain controller to normal operations.

Which three actions should you perform in sequence? (To answer, move the appropriate actions from the list of actions to the answer area, and arrange them in the correct order.)

List of Actions	Answer Area
Run the Ntdsutil utility.	Perform a restore of system state data...
Run the Dsastat utility.	Run the Ntdsutil utility
Restart the domain controller in Safe Mode.	Start the domain controller service...
Perform a restore of system state data to a time before the organizational unit was deleted.	
Start the Domain Controller service in Services (local) Microsoft Management Console (MMC).	

**Answer: Check TopCerts eEngine, Download from Member Center**

**www.TopCerts.com Q: 6 Your company has an Active Directory forest as shown in the following table. There are 10 domain controllers in each domain. You use the Remote Desktop utility from your workstation in the ma.corp.contoso.com domain.**

**You are modifying the folder permissions on a file server named FS1 in the ca.corp.contoso.com domain.**

**When you use the Microsoft Windows Explorer utility to access the Security tab of the folders, you discover that some entries start with S-1-5-21 and no account name is listed.**

**You need to ensure that the Security tab of the folders display the account names.**

**What should you do?**

Root domain	Child domain
corp.contoso.com	ma.corp.contoso.com ca.corp.contoso.com

- A. Configure the FS1 server as a Global Catalog server.
- B. Modify the schema to enable replication of the friendlynames attribute to the Global Catalog.
- C. Move the RID Master role in the ma.corp.contoso.com domain to a domain controller that does not hold the Global Catalog.
- D. Move the Infrastructure Master role in the ma.corp.contoso.com domain to a domain controller that does not contain the Global Catalog.

**Answer: D**

**www.TopCerts.com Q: 7** Your company has three Active Directory domains in a single forest. You install a new Active Directory-enabled application. The application extends the Active Directory schema with new user attributes. You discover a significant increase in the Active Directory replication traffic to the Global Catalogs after the new application is installed. You need to prevent the new attributes from being replicated to the Global Catalogs. What should you do?

- A. Uninstall the application.
- B. Delete the new attributes from the Active Directory schema.
- C. Change replication interval to 9990 for the DEFAULTIPSITELINK object.
- D. Modify the properties in the Active Directory schema for the new attributes.

**Answer: D**

**www.TopCerts.com Q: 8** Your company has a branch office that is configured as a separate Active Directory site. The site has an Active Directory domain controller. The Active Directory site requires a local Global Catalog server to support a new application. You need to configure the domain controller in the branch office as a Global Catalog server. Which tool should you use?

- A. The Dcpromo.exe utility
- B. The Computer Management console
- C. The Active Directory Domains and Trusts console
- D. The Active Directory Sites and Services console
- E. The Server Manager console

**Answer: D**

**www.TopCerts.com Q: 9** Your company, Contoso, Ltd., has an Active Directory forest that has 12 domains. The company has 24 offices. One of the branch offices has 40 users. The users are members of a universal group that grants them access to resources in all the 24 offices. The branch office has a domain controller named Contoso17. The branch office is connected to the corporate network by a 128-Kbps WAN connection. The WAN connection is available only during business hours. Users report that they are unable to log on to the network after business hours. You need to enable user logons at any time of the day. What should you do?

- A. Configure Contoso17 as a bridgehead server for the branch office site.
- B. Enable universal group membership caching for the branch office site.
- C. Decrease the replication interval on the site link that connects the branch office to the corporate network.
- D. Increase the replication interval on the site link that connects the branch office to the corporate network.
- E. Deploy a read-only domain controller (RODC) at the branch office site.

**Answer: B**

**www.TopCerts.com Q: 10** Your company has a main office and five branch offices. The Active Directory forest of the company is configured as a single domain that has four sites. The domain has a server with Active Directory Certificate Services (AD CS) installed and configured as an Enterprise Root Certificate Authority (CA). The Enterprise Root CA certificate is installed on all computers in the domain. You install a new application on all computers. The company security policy requires that the application must use only Lightweight Directory Access Protocol over Secure Sockets Layer (LDAPS). You discover that the application is unable to connect to a global catalog server in a remote site. You need to test the LDAPS connection between the client computer and the global catalog server in the remote site. What should you do?

- A. Run the Ldp.exe tool.
- B. Run the Repadmin.exe tool.
- C. Run the Certification Authority console.
- D. Run the Active Directory Sites and Services console.

**Answer: A**

**www.TopCerts.com Q: 11** You have a Windows server core installation of Windows Server 2008. The installation was completed by using the default settings. You plan to make the server accessible to the domain users. You need to change the server name. You also need to join the server to the domain. Which tool should you run?

- A. Netsh.exe
- B. Netdom.exe

- C. Ocsetup.exe
- D. Ocllist.exe

**Answer: B**

**www.TopCerts.com Q: 12** Your company has a single-domain Active Directory forest. You plan to install an Active Directory Enterprise certification authority (CA) on a dedicated stand-alone server. When you attempt to add the Active Directory Certificate Services (AD CS) role, you find that the Enterprise CA option is not available in the Specify Setup Type selection dialog box. You need to install the AD CS role on the server. What should you do?

- A. Enable the DNS Server role.
- B. Enable the Active Directory Domain Services (AD DS) role.
- C. Enable the Active Directory Lightweight Directory Service (AD LDS) role.
- D. Enable the Web server (IIS) and the AD CS roles.

**Answer: B**

**www.TopCerts.com Q: 13** You install a read-only domain controller (RODC) server at a remote location. The remote location does not provide adequate physical security for the server. You need to populate the RODC server only with the passwords of nonadministrative accounts. What should you do?

- A. Remove any administrative accounts from the RODC's group.
- B. Add administrative accounts to the Domain RODC Password Replication Denied group.
- C. Set the Deny on Receive as permission for administrative accounts on the RODC computer account Security tab for the Group Policy Object (GPO).
- D. Configure a new Group Policy Object (GPO) with the Account Lockout settings enabled. Link the GPO to the remote location. Activate the Read Allow and the Apply group policy Allow permissions for the administrators on the Security tab for the GPO.

**Answer: B**

**www.TopCerts.com Q: 14** A server named VAN-LDS1 in your company has the Active Directory Domain Services (AD DS) role and the Active Directory Lightweight Directory Services (AD LDS) role installed.

**An AD LDS instance named LDS1 stores its data on the default application directory partition.**

**The drives on the VAN-LDS1 server are configured as shown in the following table.**



You discover that the AD LDS database files are growing rapidly.

You need to relocate the AD LDS application partition to the D: drive.

Which three actions should you perform in sequence? (To answer, move the appropriate actions from the list of actions to the answer area and arrange them in the correct order.)

Drive letter	Size	Free space
C: (boot disk)	60 GB	20 GB
D:	260 GB	250 GB

**List of Actions**

Run the **net stop "Domain Controller"** command.

Run the **net stop LDS1** command.

Use the Ntdsutil tool to move the database files.

Run the **xcopy** command to move the database files.

Run the **net start LDS1** command.

Run the **net start "Domain Controller"** command.

**Answer Area**

Run the net stop LDS1 command  
Use the ntdsutil tool to move the database file  
Run the net start LDS1 command

**Answer: Check TopCerts eEngine, Download from Member Center**

**www.TopCerts.com Q: 15** Your company has 4 regional offices. You install Microsoft Windows Deployment Services (WDS) on the network. Your company creates 4 images for each of the four regional offices. There are a total of 16 images for the company. The images are to be used as standard images for workstations. You deploy the images by using WDS. An administrator from one of the regional offices reports that when she boots the WDS client computer, some of the images for her regional office do not appear on the boot menu. You need to ensure that each administrator can view the images for his or her regional office. What should you do?

- A. Place each regional office into a separate image group on the WDS server.
- B. Create a global group for each regional office, and place the computers in the appropriate global group.
- C. Create an organizational unit for each regional office, and place the computers in the appropriate organizational unit.
- D. Pre-stage each computer account by using the individual computer Global Unique Identifier (GUID) to identify its regional office.

**Answer: A**

**www.TopCerts.com Q: 16** Your company, Contoso, Ltd., has 200 servers and 5,000 computers. To provide high availability for the DHCP service, the DHCP service is installed on a two-node Microsoft Failover Cluster named PACCL1. The two nodes are named PACCLN1 and PACCLN2.

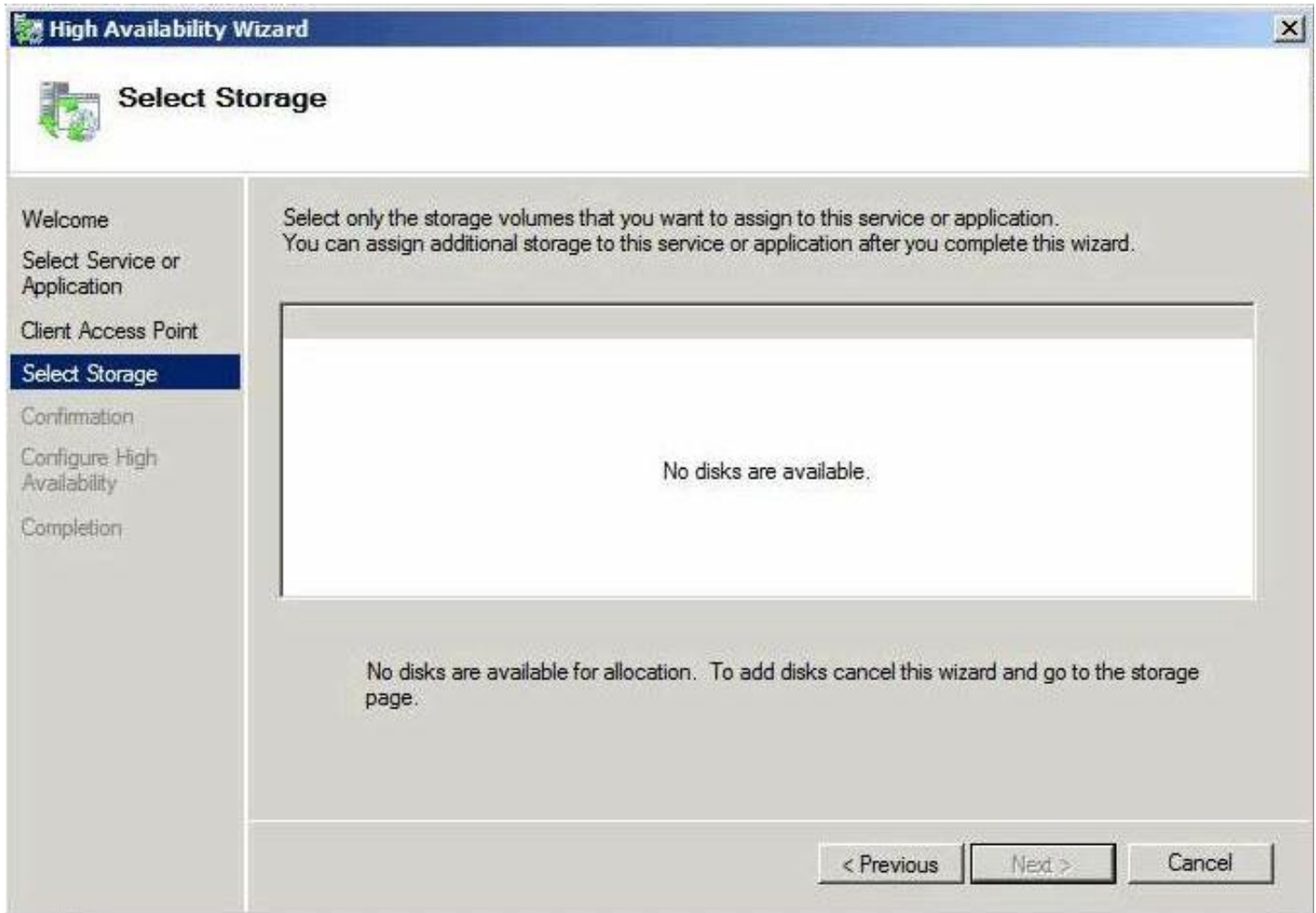
The cluster has one physical 320-GB shared disk. The disk has a single 100-GB volume.

Contoso has decided to add Microsoft Windows Internet Name Service (WINS) to the PACCL1 cluster and host the DHCP and WINS services on the different nodes.

You start the High Availability Wizard to create the WINS service group on the PACCL1 cluster. The wizard generates an error as shown in the exhibit. (Click the Exhibit button.)

You need to configure storage volumes on PACCL1 to complete the WINS service group installation.

What should you do?



- A. Create a new volume by using the free space on the existing 320-GB physical shared disk.
- B. Add an additional shared physical disk to the PACCL1 cluster. Create a new volume on the disk.
- C. Add an additional physical disk to PACCLN1 node and create a new volume on the disk. Add an additional physical disk to PACCLN2 node and create a new volume on the disk.
- D. Back up all data from the existing disk. Reconfigure the existing physical disk as a GUID partition table (GPT) disk. Create two separate volumes. Restore the original data to one of the volumes.

**Answer: B**

**www.TopCerts.com Q: 17** Your company has a single Active Directory forest. All servers run Windows Server 2008. You install Microsoft Windows Deployment Services (WDS) on the network. You capture an image of a reference computer. You deploy the image to 300 client computers. The client computers have the same name. You need to ensure that the client computers receive unique identities. What should you do?

- A. Create an image group by using the WDS snap-in. Redeploy the image to the client computers.
- B. Run the wdsutil /enable command at the command line on the WDS server. Redeploy the image to the client computers.
- C. Run the Sysprep utility on the reference computer. Capture a new image of the reference computer. Deploy the new image to the client computers.
- D. Configure read permissions for the Authenticated Users group in the directory that contains the image files. Redeploy the image to the client computers.

**Answer: C**

**www.TopCerts.com Q: 18** You install Microsoft Windows Deployment Services (WDS) on a server that runs Windows Server 2008. When you attempt to upload spanned image files to the WDS server, you receive an error message. You need to ensure that the image files can be uploaded. What should you do?

- A. Combine the spanned image files into a single WIM file.
- B. Grant the Authenticated Users group Full Control on the \REMINST directory.
- C. Run the wdsutil /Convert command at the command line on the WDS server.
- D. Run the wdsutil /add-image /imagefile:\server\share\sources\install.wim /image type:install command for each component file individually at the command line on the WDS server.

**Answer: A**

**www.TopCerts.com Q: 19** You install the Windows Server 2008 operating system on a new computer named SRV1. You run six driver installation programs from third-party CDs. When you restart the computer, SRV1 fails to start correctly. The following error message is displayed: "Windows could not start because the following file is missing or corrupt: \WINNT\SYSTEM32\CONFIG\SYSTEM." You need to repair the registry on SRV1. What should you do?

- A. Shut down SRV1. Restart SRV1 by using the installation media. Perform a System Restore on SRV1.
- B. Shut down SRV1. Restart SRV1 by using the installation media. Start Recovery Console and run the fixboot command.
- C. Restart SRV1 in Safe Mode and run the bootcfg command at the command line with the appropriate switches.

D. Restart SRV1 in Safe Mode and run the bcdedit command at the command line with the appropriate switches.

**Answer: A**

**www.TopCerts.com Q: 20** Your company runs Microsoft Windows Server Update Services (WSUS) on a server named Server1. Server1 runs Windows Server 2008. Server1 is located on the company intranet. WSUS is installed on the default Web site. You configure the update and statistics servers to use Secure Socket Layer (SSL). You need to configure a group policy object to specify the intranet update locations. Which URLs should you use?

- A. http: //SERVER1 http: //SERVER1
- B. http: //SERVER1:8080 http: //SERVER1:8080
- C. https: //SERVER1 https: //SERVER1
- D. https: //SERVER1:8080 https: //SERVER1:8080

**Answer: C**

**www.TopCerts.com Q: 21** Your company has a server named VS1 that runs Windows Server 2008 and Microsoft Virtual Server 2005 R2. VS1 hosts ten virtual servers. One of the virtual servers named WinNT runs a database application. The WinNT virtual server is supported by a dedicated administrator. The administrator user account name is WinNT\_Admin. You plan to provide the WinNT\_Admin administration account access to the Virtual Server standard tools on the VS1 server. You also plan that the WinNT\_Admin administration account will only be able to view and access the WinNT virtual server. You need to configure the VS1 server for the WinNT\_Admin account. Which two actions should you perform? (Each correct answer presents part of the solution. Choose two.)

- A. Open the Virtual Server Administration Web site and connect to VS1. Configure the WinNT virtual server to run under the WinNT\_Admin account.
- B. Open the Virtual Server Administration Web site and connect to VS1. Configure the VS1 security settings to set the Deny Modify permission for the WinNT\_Admin account.
- C. Open the Virtual Server Administration Web site and connect to VS1. Configure the VS1 security settings to grant the WinNT\_Admin account the Allow View and Allow Control permissions.
- D. Set the Deny Read permission for the WinNT\_Admin account on all virtual server configuration files except the virtual server configuration file for the WinNT virtual server.
- E. Set the Deny Read permission for the WinNT\_Admin account on all virtual hard disk files except the virtual hard disk files that are used by the WinNT virtual server.

**Answer: C, D**

**www.TopCerts.com Q: 22** Your company has a main office and 250 branch offices. The company uses a distributed data processing application to synchronize data across the main office and all branch offices. One of the components of the application is the Distributed Transaction Coordinator (DTC) service. The DTC service in the main office is installed on a three-node Microsoft Failover Cluster. The three nodes are named DTCNODE1, DTCNODE2, and DTCNODE3. The cluster has a dedicated resource group named DTC SERVICE for the DTC service. You test the DTC SERVICE group failover. You discover that the DTC SERVICE group is unable to fail over to DTCNODE3 from DTCNODE1 or DTCNODE2. The failover from DTCNODE1 to DTCNODE2 functions without errors. Further tests show that you can fail over other resource groups to DTCNODE3 from DTCNODE1 or DTCNODE2. You need to configure the DTC SERVICE group to support the failover between all cluster nodes. What should you do?

- A. Allow failback for the DTC SERVICE group.
- B. Select DTCNODE3 as a preferred owner for the DTC SERVICE group.
- C. Remove DTCNODE3 as a possible owner from all cluster resources in the DTC SERVICE group.
- D. Configure DTCNODE3 as a possible owner for all cluster resources in the DTC SERVICE group.

**Answer: D**

**www.TopCerts.com Q: 23** Your company is deploying notebook computers that will be used to connect to the wireless network. You create a group policy and configure profiles by using the names of approved wireless networks. You link the group policy object (GPO) to the Notebook organizational unit. The new notebook computer users report that they cannot connect to the wireless network. You need to ensure that the group policy wireless settings are applied to the notebook computers. What should you do?

- A. Run the gpupdate /boot command on the notebook computers.
- B. Run the gpupdate /target:computer command on the notebook computers.
- C. Connect the notebook computers to the wired network. Log off the notebook computers, and then log on again.
- D. Run the Add a network that is in range of this computer wizard on the notebook computers and leave the service set identifier (SSID) blank.

**Answer: C**

**www.TopCerts.com Q: 24** Your company plans to open a new branch office as a part of its Active Directory infrastructure. Users from the engineering department have to dial in to the company network when they work at the new branch office. You create a template account for new users in the engineering department. You need to ensure that all new user accounts in the engineering department hold the appropriate dial-in rights. What should you do?)

- A. Add the group membership information to the template account, and then create a connection request policy that includes the new group.
- B. Add the group membership information to the template account, and then create a group policy that grants the new group local logon permissions
- C. Modify the schema for the account by changing the Logon Hours to 6:00-18:00 hours Monday through Friday.
- D. Modify the schema for the group membership attribute by selecting the Index this attribute in the Active Directory check box.

**Answer: A**

**www.TopCerts.com Q: 25 Your company uses Routing and Remote Access Service (RRAS) for remote user access. The remote users' computers are not domain members. You discover that the remote users' computers are the source of a virus on internal member servers. You need to protect the corporate network against viruses that are transmitted from remote users. What should you do?**

- A. Deploy file-level antivirus software on the RRAS server and configure automatic updates for the antivirus software.
- B. Configure a network health policy to require that an antivirus application is running and that the antivirus application is up to date.
- C. Configure a network health policy to require that an anti-spyware application is running and that the anti-spyware application is up to date.
- D. Create an organizational unit for remote users. Deploy antivirus software to the organizational unit by using a group policy object (GPO).

**Answer: B**

**www.TopCerts.com Q: 26 Your company has a main office and 15 branch offices. The company has a single Active Directory domain. All servers run Windows Server 2008.**

**The main office network and the branch office networks are connected by using Routing and Remote Access Servers (RRASs) at each office.**

**The networks will be connected by virtual private network (VPN) connections over the Internet.**

**The company's security policy has the following requirements for VPN connections:**

- All data must be encrypted by using end-to-end encryption.**
- The VPN connection must use computer-level authentication.**
- Username and passwords cannot be used for authentication.**

**You need to ensure that the VPN connections between the main office and the branch offices meet the requirements.**

**What should you do?**

- A. Configure an IPsec connection to use tunnel mode and preshared key authentication.
- B. Configure a Point-to-Point Tunneling Protocol (PPTP) connection to use version 2 of the Microsoft Challenge Handshake Authentication Protocol (MS-CHAP v2) authentication.
- C. Configure a Layer Two Tunneling Protocol/Internet Protocol Security (L2TP/IPsec) connection to use the Extensible Authentication Protocol/Transport Layer Security (EAP-TLS) authentication.
- D. Configure a Layer Two Tunneling Protocol/Internet Protocol Security (L2TP/IPsec) connection to use version 2 of the Microsoft Challenge Handshake Authentication Protocol (MS-CHAP v2) authentication.

**Answer: C**

**www.TopCerts.com Q: 27** Your company has Network Access Protection (NAP) configured for the corporate network with the default settings. You deploy an application to client computers that run Windows Vista. The application connects to a remote database server. The application fails on the client computers. You discover that the anti-spyware software on the client computers is incompatible with the new application. You disable the anti-spyware software on the client computers. The application continues to fail on the client computers. You need to ensure that all client computers can run the new application. What should you do?

- A. Disable the An anti-spyware application is on setting on the Windows Security Health Validator dialog box.
- B. Disable the Anti-spyware is up to date setting on the Windows Security Health Validator dialog box.
- C. Configure the Error code resolution setting for the System health agent failure option to Healthy.
- D. Configure the Windows Defender service to the Manual Startup type on the client computers. Re-start the Windows Defender service.

**Answer: A**

**www.TopCerts.com Q: 28** Your company has Network Access Protection and Active Directory Certificate Services (AD CS) deployed on the network. You set up new portable computers to connect to the company's wireless network. The portable computers will use PEAP-MS-CHAP V2 for authentication. You need to ensure that the portable computers can join the domain when users restart their portable computers. What should you do?

- A. Run the netsh wlan export profile command on each portable computer.
- B. Configure each portable computer with a Bootstrap Wireless profile.
- C. Configure a group policy with the Use Windows WLAN Auto Config service for clients policy setting enabled.
- D. Configure a group policy with the Use Windows Wired Auto Config service for clients policy setting disabled.



**Answer: B**

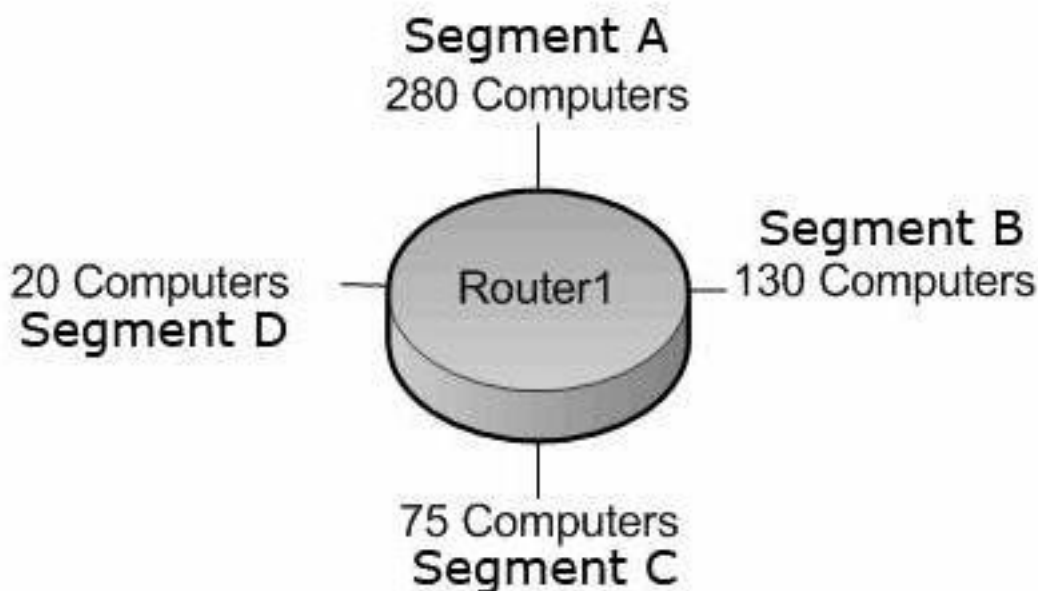
**www.TopCerts.com Q: 29** Your company has an IPv6 network. The IPv6 network has 25 segments. You deploy a server on the IPv6 network. You need to ensure that the server can communicate with systems on all segments of the IPv6 network. What should you do?

- A. Configure the IPv6 address as fd00::2b0:d0ff:fee9:4143/8.
- B. Configure the IPv6 address as fe80::2b0:d0ff:fee9:4143/64.
- C. Configure the IPv6 address as ff80::2b0:d0ff:fee9:4143/64.
- D. Configure the IPv6 address as 0000::2b0:d0ff:fee9:4143/64.

**Answer: A**

**www.TopCerts.com Q: 30** Your company is designing its public network. The network will use an IPv4 range of 131.107.40.0/22. The network must be configured as shown in the exhibit. You need to configure subnets for the segments of the network. Your solution must support the computers on each segment.

What network addresses should you assign?



- A. Segment A: 131.107.40.0/23

Segment B: 131.107.44.0/24  
Segment C: 131.107.45.0/25  
Segment D: 131.107.45.128/27  
B. Segment A: 131.107.40.0/25  
Segment B: 131.107.42.128/26  
Segment C: 131.107.45.192/27  
Segment D: 131.107.45.224/30  
C. Segment A: 131.107.40.0/23  
Segment B: 131.107.43.0/24  
Segment C: 131.107.43.128/25  
Segment D: 131.107.45.0/27  
D. Segment A: 131.107.40.128/23  
Segment B: 131.107.45.0/24  
Segment C: 131.107.46.0/25  
Segment D: 131.107.46.128/27

**Answer: A**

**www.TopCerts.com Q: 31 Your company has a single Active Directory domain. All servers run Windows Server 2008. Your company uses an Enterprise Certificate Authority. Company security policy requires that revoked certificate information be made available. You need to ensure that revoked certificate information is highly available. What should you do?**

- A. Implement an Online Certificate Status Protocol (OCSP) responder by using Network Load Balancing.
- B. Publish an Online Certificate Status Protocol (OCSP) responder by using an Internet Security and Acceleration Server array.
- C. Publish the trusted certificate authorities list to the domain by using a group policy object.
- D. Create a new group policy object that allows users to trust peer certificates. Link the group policy object (GPO) to the domain.

**Answer: A**

**www.TopCerts.com Q: 32 Your company has a single Active Directory domain. All servers run Windows Server 2008. The company network has 10 servers that perform as Web servers. All confidential files are located on a server named FSS1. The company security policy states that all confidential data must be transmitted in the most secure manner. You activate Encrypting File System (EFS) on the confidential files. You also add EFS certificates to the Data Decryption Field (DDF) of the confidential files for the users who want to access them. When you monitor the network, you notice that the confidential files that are stored on the FSS1 server are being transmitted over the network without encryption. You need to ensure that encryption is always used when the confidential files on the FSS1 server are transmitted over the network. What are two possible ways to achieve this goal? (Each correct answer presents a complete solution. Choose two.)**

- A. Deactivate all LM and NTLM authentication methods on the FSS1 server.
- B. Use IIS to publish the confidential files, activate SSL on the IIS server, and then open the files as a Web folder.
- C. Use IPSec encryption between the FSS1 server and the computers of the users who want to access the confidential files.
- D. Use the Server Message Block (SMB) signing between the FSS1 server and the computers of the users who want to access the confidential files.
- E. Activate offline files for the confidential files that are stored on the FSS1 server. In the Folder Advanced Properties dialog box, select the Encrypt contents to secure data option.

**Answer: B, C**

**www.TopCerts.com Q: 33** Your company has a single Active Directory domain. The company runs an ISA 2006 server as a firewall. You set up access for users to connect through a virtual private network (VPN) service by using Point-to-Point Tunneling Protocol (PPTP). When the users try to connect to the VPN server, the following error message is displayed: "Error 721: The remote computer is not responding." You need to ensure that the users can successfully establish a VPN connection. What should you do?

- A. Open up port 1423 on the firewall.
- B. Open up port 1723 on the firewall.
- C. Open up port 3389 on the firewall.
- D. Open up port 6000 on the firewall.

**Answer: B**

**www.TopCerts.com Q: 34** You install and configure the IIS Server role on a server that runs Windows Server 2008. You need to back up the configuration changes on the IIS server. What should you do?

- A. Run the adsutil create C:\mainbackup script on the IIS server.
- B. Run the appcmd add site "MainBackup" command on the IIS server.
- C. Run the appcmd add backup "MainBackup" command on the IIS server.
- D. Run the add-memberCmemberType Method MainBackup command in the Microsoft Windows PowerShell utility on the IIS server.

**Answer: C**

**www.TopCerts.com Q: 35** Your company hosts Web sites for 22 customers. The company has a dedicated SMTP server for each Web site. You have installed the IIS Server role and the SMTP Server feature on a server that runs Windows Server 2008. Your company acquires a new customer. You create a new Web site and an SMTP server for the new customer. The SMTP server does not start. You need to configure the new SMTP server on the IIS server to start. What are two possible ways to achieve this goal? (Each correct answer presents a complete solution. Choose two.)

- A. Run the iisreset command on the IIS server.
- B. Run the iisreset /ENABLE SMTP command on the IIS server.
- C. Configure the smart host setting on the SMTP server.
- D. Configure the new SMTP server by using a different port.
- E. Configure the new SMTP server by using a different IP address.

**Answer: D, E**

**www.TopCerts.com Q: 36** You have installed the IIS Server role on a server that runs Windows Server 2008. At present, you run the Common Gateway Interface (CGI) legacy applications on an IIS 5.0 server. These applications must run on an IIS 7.0 server. You need to configure the IIS 7.0 server to run the CGI legacy applications. Which command should you run on the IIS 7.0 server?

- A. iisreset /start
- B. iisreset /enable
- C. appcmd set config /section:handlers /[name='CGIModule'].requireAccess:Script
- D. appcmd set config /section:handlers /[name='CGIModule'].requireAccess:Execute

**Answer: D**

**www.TopCerts.com Q: 37** You install the IIS Server role on a server that runs Windows Server 2008. Your company plans to add a new Web site to the IIS server by using the settings as shown in the following table.

You need to configure the new Web site by using the outlined settings.

What should you do?

Name of setting	Value
Site name	contoso
ID	2
Location	D:\contoso_content
Port	80
Host Header	www.contoso.com

- A. Run the appcmd set app /app.name: contoso /[path='/'].physicalPath:d:\contoso\_content\_ID2 command on the server.
- B. Run the appcmd add app /app.name: contoso /[path='/'].physicalPath:d:\contoso\_content\_ID2 command on the server.
- C. Run the appcmd add site /name: contoso /id:2 /physicalPath: d:\contoso\_content /binding:http/\*:80:www.contoso.com command on the server.
- D. Run the set-location Cliteralpath "d:\contoso\_content" contoso ID:2 location port:80 domain:www.contoso.com command in the Microsoft Windows PowerShell utility on the server.

**Answer: C**

**www.TopCerts.com Q: 38** You manage a computer named FTPSrv1 that runs Windows Server 2008. Your company policy requires that the FTP service be available only when required by authorized projects. You need to ensure that the FTP service is unavailable after rebooting the server. What should you do?

- A. Run the iisreset command on the FTPSrv1 server.
- B. Run the net stop msftpsvc command on the FTP server.
- C. Run the cscript iisftp /stop command on the FTPSrv1 server.
- D. Run the WMIC /NODE:FTPSrv1 SERVICE WHERE caption="FTP Publishing Service" CALL ChangeStartMode "Disabled" command on the FTP server.

**Answer: D**

**www.TopCerts.com Q: 39** You install the IIS Server role on a server named Server1. You install the File Server role on a server named Server2. The Server1 disk drive that stores the Contoso/Apps virtual directory is running out of space. You move the data to a new shared directory named WebApp on Server2. You need to configure Apps to use WebApp. What should you do?

- A. Run the appcmd set vdir /vdir.name: Server2/Apps /physicalPath:c:\WebApp command on Server2.
- B. Run the appcmd set vdir /vdir.name:Contoso/Apps /physicalPath:c:\WebApp command on Server2.

- C. Run the appcmd set vdir /vdir.name: WebApp/Apps /physicalPath:\\Server2\WebApp command on Server1.
- D. Run the appcmd set vdir /vdir.name:Contoso/Apps /physicalPath:\\Server2\WebApp command on Server1.

**Answer: D**

**www.TopCerts.com Q: 40** Your company has the IIS Server role installed on a server that runs Windows Server 2008. Users report that they receive error messages when they attempt to connect to the IIS server. You verify the server and receive the following error message: "The maximum number of worker processes is reached or out of resources." You need to identify the Web site that is causing the problem. Which command should you run on the IIS server?

- A. appcmd list wp
- B. appcmd list site
- C. appcmd list apppool
- D. appcmd list requests

**Answer: A**

**www.TopCerts.com Q: 41** You manage a member server that runs Windows Server 2008. The member server has the IIS Server role installed. The Web server hosts an intranet Web site. The Web site is configured by using Windows Authentication as the only authentication method that is set to Enabled. You create a new virtual directory named /hr/. The /hr/ virtual directory holds content that can be accessed only by the members of the HRUsers global group. You need to configure the Web site so that only members of the HRUsers global group have access to the /hr/ virtual directory. What should you do?

- A. Remove the default Allow Authorization rule on the /hr/ virtual directory.
- B. Modify the default Allow Authorization rule on the /hr/ virtual directory. Select the Specified roles or user groups setting and add the HRUsers group name.
- C. Add a new Deny Authorization rule on the /hr/ virtual directory that applies to all anonymous users. Remove the default Allow Authorization rule on the /hr/ virtual directory.
- D. Modify the default Allow Authorization rule on the /hr/ virtual directory. Select the Specified roles or user groups setting and add the HRUsers group name. Add a new Deny Authorization rule that applies to all users on the /hr/ virtual directory.

**Answer: B**

**www.TopCerts.com Q: 42** You manage a member server that runs Windows Server 2008. The member server has the IIS Server role installed. The server hosts an SSL Web site that is restricted to the executives of your company. The company policy states that the executives must access the confidential Web content by using user certificates. You discover that the executives are able to access the secure Web site by typing their username and password. You need to ensure that the executives can only access the secure Web site by using their certificates. What should you do?

- A. Configure the SSL settings to Require 128-bit SSL in the confidential Web site properties dialog box.
- B. Configure the Client Certificates settings to Accept on the SSL settings in the confidential Web site properties dialog box.
- C. Configure the Client Certificates settings to Require on the SSL settings in the confidential Web site properties dialog box.
- D. Configure a Group Policy Object that defines a Certificate Trust list to include the Certificate Authority (CA) certificate for the CA that issues the certificates to the executives. Apply the policy to all executive user accounts.

**Answer: C**

**www.TopCerts.com Q: 43** Your company, Contoso, Ltd., has a Web server named WEB1. The Web server runs Windows Server 2008. The fully qualified domain name of WEB1 is web1.contoso.com. The public DNS server has an alias record named owa.contoso.com that maps to web1.contoso.com. Users access WEB1 on the Internet by using http://owa.contoso.com. The new company security policy states that the owa.contoso.com site must be available for the Internet users only through secure HTTP (HTTPS) protocol. The security policy also states that users must not get security warnings when they connect to the site. You decide to request a certificate from a public certification authority (CA). You open the SSL Certificates window and start the Create Certificate Request Wizard. You need to complete the Request Certificate form. Which name should you use in the Common Name field?

- A. WEB1
- B. Contoso, Ltd.
- C. owa.contoso.com
- D. web1.contoso.com

**Answer: C**

**www.TopCerts.com Q: 44** Your company provides Web hosting services. You manage a member server that runs Windows Server 2008. The server has the IIS Server role installed. The server hosts Web sites for 10 partner companies. You are configuring a Web site for a new partner company named Contoso, Ltd. on the IIS server. You store content for the Contoso Web site on the IIS server. You store the HTML content documents for a virtual directory for the Web site on a remote server named FS3. The FS3 server runs Windows Server 2008. The content folder is a shared folder named CONTOSO\_VDIR. You grant the share permission and the NTFS permission to a user account named CONTOSO\_GUY in the virtual directory content on FS3. Users are unable to access the content in the virtual directory although they can access the main Web site. You need to enable the users to access the content in the virtual directory. What should you do?

- A. Add the CONTOSO\_GUY user account to the Domain Administrators global security group.
- B. Add the CONTOSO\_GUY user account to the Windows Authorization Access Domain local security group.
- C. Configure the Connect As Specific User setting to CONTOSO\_GUY in the properties of the virtual directory.
- D. Select the Edit Permissions option for the virtual directory. Set the Use this folder type as a template setting to Documents on the Customize tab.

**Answer: C**

**www.TopCerts.com Q: 45** Your company runs Windows Server 2008. You manage a file server named FS1. The FS1 server stores data for the management team in the D:\Management folder. Managers are required to access the D:\Management folder by using secure HTTP (HTTPS) protocol. You add an IIS Server role that has default settings to FS1. You change the Physical path option on the default Web site to D:\Management. You open the SSL settings window and discover that all the options in the window are grayed out and unavailable. You need to activate SSL for the default Web site. Which two actions should you perform? (Each correct answer presents part of the solution. Choose two.)

- A. Add a server certificate to FS1 by using the IIS Manager console.
- B. Add bindings for the HTTPS protocol to the default Web site by using the IIS Manager console.
- C. Install the Digest Authentication component for the Web server role by using the Server Manager console.
- D. Use the IIS Manager console. Select the Generate Key option in the Machine Key window for the default Web site.
- E. Use the IIS Manager console to restore the default settings of the default Web site. Add a new Web site and configure the Physical path option for the site to D:\Management.

**Answer: A, B**



**www.TopCerts.com Q: 46** You install the IIS Server role on a server that runs Windows Server 2008. You add a Web site that uses a virtual directory named App1. The virtual directory contains an approved CGI application. You test the Web site. The CGI application fails. The company security policy states that permissions must not be granted unless required to accomplish an approved business goal. You need to allow the CGI application to run while meeting the security requirements. How should you configure the Handler permissions?

- A. Enable the Execute option for the Web site.
- B. Enable only the Script option for the Web site.
- C. Enable the Execute option for the App1 virtual directory.
- D. Enable only the Read option for the App1 virtual directory.

**Answer: C**

**www.TopCerts.com Q: 47** Your company provides Web hosting services. You manage a server that runs Windows Server 2008. The server has the IIS Server role installed. The server hosts Web sites for multiple client companies. You are configuring a Web site for a new client company on the IIS server. You test the new configuration. The Web site looks like an FTP file download page instead of the required HTTP presentation of the Web content. You need to configure the Web site to provide the HTTP presentation of the content. You also need to ensure that the files are not presented for download. Which two actions should you perform? (Each correct answer presents part of the solution. Choose two.)

- A. Create a dedicated application pool for the Web site.
- B. Configure the Default Document setting to match the Web page file for the Web site.
- C. Run the `appcmd set config /section:directoryBrowse /enabled:false` command.
- D. Grant the Allow - Read and Execute permission to the IUSR user in the Web site content folder.
- E. Create a canonical name (CNAME) record for www in the DNS zone for the domain of the new client company.

**Answer: B, C**

**www.TopCerts.com Q: 48** You manage a member server that runs Windows Server 2008. The member server has the IIS Server role installed. The IIS server hosts the intranet Web site of your company. The Authentication settings for the Web site are configured as shown in the exhibit. (Click the Exhibit button.)

A branch office connects to the intranet Web site through a proxy server. All client computers use the Microsoft Internet Explorer browser.

Users from the branch office are unable to authenticate on the Web site. Users on the corporate network have no problems authenticating and accessing the Web site.

For performance reasons, only the authentication process can be encrypted on the IIS server.

You need to configure the Web site to support authentication for the users on the corporate network and for the users in the branch office.

What should you do?



A. Add the Digest Authentication role service to the IIS server. Configure the Digest Authentication setting to Enabled.

- B. Add the Host Credential Authorization Protocol role service to the IIS server. Configure the Host Credential Authorization Protocol setting to Enabled.
- C. Configure the Basic Authentication setting to Enabled. Configure the Windows Authentication setting to Disabled. Configure the Web site properties to Require SSL.
- D. Configure the Internet Options Advanced setting to deselect the Enable Integrated Windows Authentication option on each computer in the branch office.

**Answer: A**

**www.TopCerts.com Q: 49** Your company has an Active Directory domain. All servers in the domain run Windows Server 2008. The Terminal Services Gateway role is installed on a server named Server1. The Terminal Services role is installed on servers named Server2 and Server3. Server2 and Server3 are configured in a load balancing Terminal Server farm named TSLoad. A coworker deploys Terminal Server Broker Service on a new server named Server4. The coworker adds the TSLoad farm to the Terminal Server Broker Service configuration on Server4. You configure the published applications to use Terminal Server Broker Service. You discover that Terminal Server Broker Service does not accept connections from Server2 and Server3. You need to ensure that Terminal Server Broker Service can accept connections from Server2 and Server3. What should you do?

- A. Add Server2 and Server3 to the Session Broker Computers local group on Server4.
- B. Add Server2 and Server3 to the Windows Authorization Access domain local security group in the Active Directory domain.
- C. Configure a group policy object (GPO) to set the Require secure RPC communications option in the Terminal Services Security section to True. Apply the policy to Server2 and Server3.
- D. Configure a group policy object (GPO) to set the Allow reconnection from original client only option in the Terminal Services section to True. Apply the policy to all client computers.

**Answer: A**

**www.TopCerts.com Q: 50** You install a member server named TS01 that runs Windows Server 2008. The member server has the Terminal Services role installed. The Terminal Server user profiles are stored in a folder named TSProfiles on TS01. The home folder for each user is stored on a server named FS03. You monitor TS01 and observe that there is less than 5 percent free space on the volume that stores the Terminal Server user profiles. You discover that users are storing data in their profiles instead of their home folders. You need to limit the amount of data that is stored in each users profile to a maximum of 100 MB. What should you do?

- A. Create a new group policy object that applies to the Terminal Server. Configure the Default Quota Limit to 100 MB in the Default Quota Limit and Warning Level policy.
- B. Create a new group policy object that applies to all users of Terminal Services. Configure the Folder Redirection settings to redirect the My Documents folders to FS03.

- C. Activate disk quotas for the volume that hosts the TSProfiles folder. Configure the quota for the volume that hosts TSProfiles to deny space to users who exceed 100 MB of data.
- D. Configure the Profile Path attribute in the properties of each user account in the Active Directory directory service to store the Terminal Server profiles in a shared folder on FS03.

**Answer: C**

**www.TopCerts.com Q: 51 Your company has an Active Directory domain. The Terminal Services role is installed on a member server named Server1. The Terminal Services Licensing role is installed on a new test server named Server10 in a workgroup. You cannot enable the Terminal Services Per User Client Access License (CAL) mode in the Terminal Services Licensing role on Server10. You need to ensure that you can use the Terminal Services Per User CAL mode on Server10. What should you do?**

- A. Join Server10 to the domain.
- B. Obtain license keys from Microsoft Clearinghouse. Enter the keys into the Licensing server.
- C. Configure Server1 to use Server10 for the Terminal Services Licensing role. Reconfigure Server10 for the Terminal Services Per User CAL mode.
- D. Install the Terminal Services Gateway role on Server1. Configure a group policy object that configures Server1 to use Server10 for licensing. Apply the policy to Server1.

**Answer: A**

**www.TopCerts.com Q: 52 Your company has an Active Directory domain. The company runs Terminal Services. All client computers run Windows Vista. You need to ensure that users are able to run Windows Media Player 11 during a Terminal Services session. What should you do?**

- A. Install the Desktop Experience feature on the Terminal Server.
- B. Install the Quality Windows Audio Video Experience feature on the Terminal Server.
- C. Create a new group policy object that configures the Do not allow desktop composition policy option inside the Desktop Window Manager template to True. Apply the policy to all client computers in the domain.
- D. Create a new group policy object that configures the Policy-based QoS option and set the Differential Services Code Point value to 10 for the Windows Media Player 11 executable. Apply the policy to the Terminal Server.

**Answer: A**

**www.TopCerts.com Q: 53** A server named Server2 runs Windows Server 2008. The Terminal Services server role is installed on Server2. You plan to deploy a new Terminal Services application on Server2. The program vendor confirms that the application can be deployed in a Terminal Services environment. The application does not use Microsoft Windows Installer packages for installation. The application makes changes to the current user registry during installation. You install the application on Server2. Users report that the application stops responding. You discover that sessions are being disconnected. You need to ensure that the application supports multiple sessions. What should you do?

- A. Run the `mstsc /v:Server2 /console` command from your client computer to log on to Server2. Install the application.
- B. Run the `chgusr /execute` command on Server2. Install the application and run the `chgusr /install` command on Server2.
- C. Run the `chgusr /install` command on Server2. Install the application and run the `chgusr /execute` command on Server2.
- D. Run the `chglogon /disable` command on Server2. Install the application and run the `chglogon /enable` command on Server2.

**Answer: C**

**www.TopCerts.com Q: 54** Your company has an Active Directory domain. Two servers named Server1 and Server2 run Windows Server 2008. The Terminal Services Gateway role is installed on Server1. The Terminal Services role is installed on Server2. All printers on the network support only PostScript. Users in the domain must be able to print to printers that do not have native driver support. You need to ensure that Terminal Services automatically provides generic printer support. What should you do?

- A. Add a printer instance to Server2 that uses the PostScript driver. Configure client computers to print to the PostScript printer instance.
- B. Add a printer instance to Server2 that uses the PostScript driver. Create a new group policy object that publishes the printer instance to each client computer. Deploy the group policy to the client computers.
- C. Create a new group policy object that configures the Specify terminal server fallback printer driver behavior policy setting to Default to PS if one is not found. Apply the policy to Server2.
- D. Create a new group policy object that configures the Specify terminal server fallback printer driver behavior policy setting to Default to PS if one is not found. Apply the policy to all client computers in the domain.

**Answer: C**

**www.TopCerts.com Q: 55** Two servers named Server2 and Server3 run Windows Server 2008. The Terminal Services role is installed on Server2 and Server3. The Terminal Services Gateway role is installed on Server3.

Applications on Server2 are published by using a Remote Desktop Connection configuration file (.rdp file). Users download the .rdp files from the TSWeb virtual directory on Server2.

You reconfigure the applications on Server2 to use the Terminal Services Gateway role on Server3. You export the Remote Program settings from Server2 and import them to Server3.

Users report that they cannot access the remote applications on Server3. Users can access the remote applications on Server2 by using the Terminal Services Gateway on Server3.

You verify that the application paths on both servers are identical.

You need to ensure that the users can access the applications on Server3.

What should you do?

- A. Disable the Network Level Authentication feature on Server3.
- B. Re-create the .rdp files on Server3 and redistribute the files to the users.
- C. Copy the .rdp files from Server2 to a new TSWeb virtual directory on Server3.
- D. Configure and activate the Terminal Server Session Directory feature on Server3. Configure Server2 to use the Terminal Server Session Directory feature.

**Answer: B**